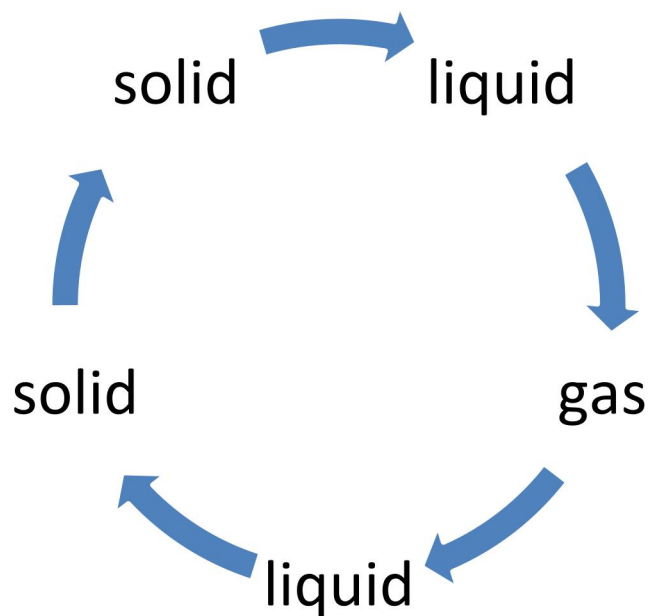


Comment on the following statements:

- (a) Evaporation causes cooling.
- (b) Sponge is compressible though it is a solid.
- (c) Sugar crystals dissolve faster in hot water than cold water.
- (d) A small volume of water in a kettle can fill a kitchen with steam.
- (e) A sample of water under study was found to boil at  $102^{\circ}\text{C}$  at normal temperature and pressure. Is the water pure? Will this water freeze at  $0^{\circ}\text{C}$ ?

Question 2: Name the process which converts:

- (a) Solid to liquid
- (b) Liquid to gas
- (c) Gas to liquid
- (d) Liquid to



solid