

D.A.V. PUBLIC SCHOOL, SASARAM

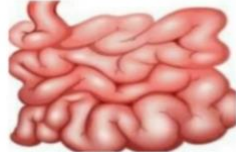
THIRD WORKSHEET OF SCIENCE

CLASS – 4A & 4B

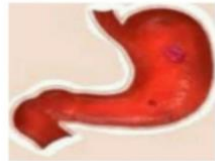
CHAPTER – 1

Q1. Identify the organ present in the digestive system :

1)



2)



3)



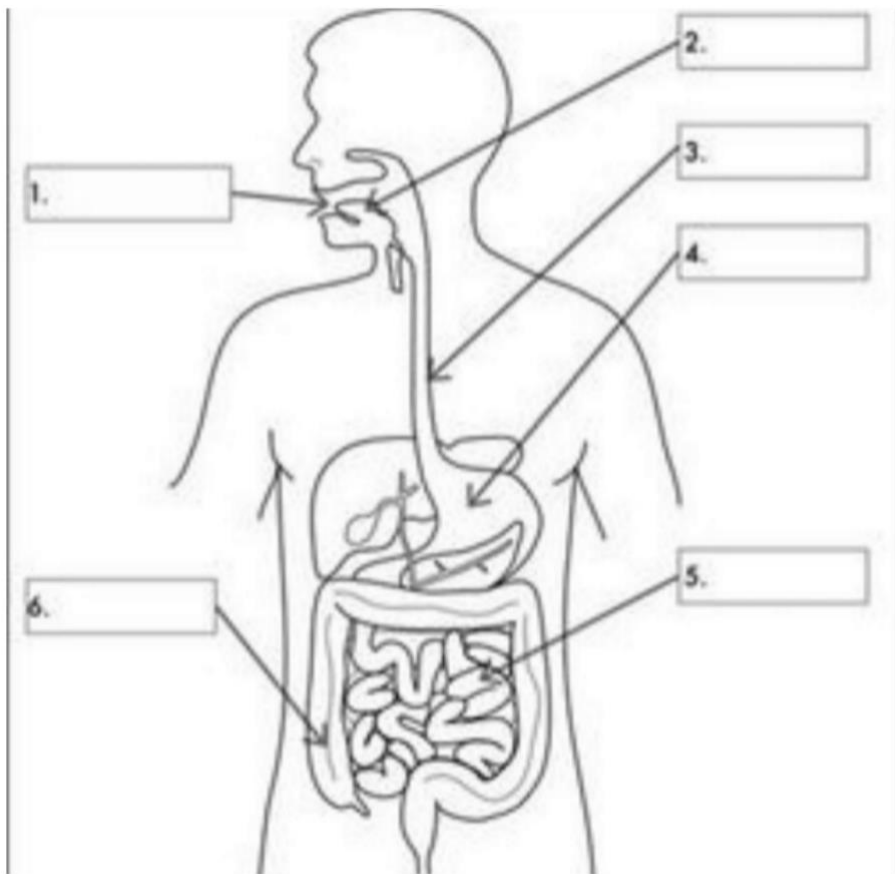
• 4)



Q.2 What are the different components of food we eat ?

Q.3 Label the region responsible for tasting sweet and sour on the diagram of tongue.

Q.4 Label and colour the following organs which are involved in the digestion of food.



Puja

D.A.V.PS, Sasaram

Label and colour the following organs which are involved in the digestion of food .

