

DAV PUBLIC SCHOOL, Admapur Sasaram
Class-VIII

Name: _____

BIOLOGY WORKSHEET

- Q1. Cheek cells do not have _____
- Q2. A suitable term for the various components of cells is _____
- Q3. The jelly-like fluid substance present in cells is called _____
- Q4. Green colour of leaves is due to presence of the pigment _____
- Q5. The most important function of cell membrane is that it _____
- Q6. The thread-like structures present in the nucleus are _____
- Q7. Which structures are found only in plant cell?
- Q8. What is the function of ribosomes?
- Q9. Name the plastids and write their functions.
- Q10. What is cell? who discovered cell? and when?
- Q11. Name the largest cell?
- Q12. Name the smallest cell?
- Q13. Name the longest cell?
- Q14. What is tissue?
- Q15. Which organelle is known as power house of the cell?
- Q16. In leaves, name the cell organelle and pigment that is responsible for green colour.
- Q17. Classify the following terms into cells, tissues and organs and

write in the tabular column given below.

RBC, WBC, Nerve cell, blood, muscle, blood vessels, brain, heart, hand

Q18. . Read the following statements and write the appropriate term against each statement.

- A. I control the functions of a cell. Who am I?
- B. I am like a policeman. I do not allow anything and everything to get in and out of the cell. Who am I?
- C. I transfer characters from parents to offsprings. Who am I?.....

Q19. Fill in the blanks with the terms given in the box below:

Nucleus, chromosomes, cell wall, cell membrane, protoplasm, cytoplasm, ribosome, cell organelles

The outermost layer of plant cells is the(a)..... beneath which is the(b)..... . The term(c)..... refers to the jelly-like substance containing all the(d)..... . The(e)..... contains thread-like structures called(f)..... .

Q20. Label the parts A to E in the given as Fig.1 diagram.

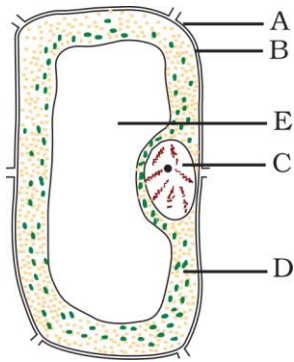


Fig.1

By- Jyoti Pasricha